

Saltaire is an exceptionally well-preserved Victorian industrial model town, built philanthropically by its patron Sir Titus Salt to fulfil the housing and social needs of the workforce that he employed. Its architecture and urban design informed the design of other industrial communities and latterly influenced the development of the town planning movement in the UK. In 2001, Saltaire was awarded World Heritage Status in recognition of its significance as a planned and largely intact model settlement. It has Outstanding Universal Value as a heritage site and it is therefore afforded a very high level of protection. Saltaire is also a conservation area and has one of the highest concentrations of listed buildings in the country.

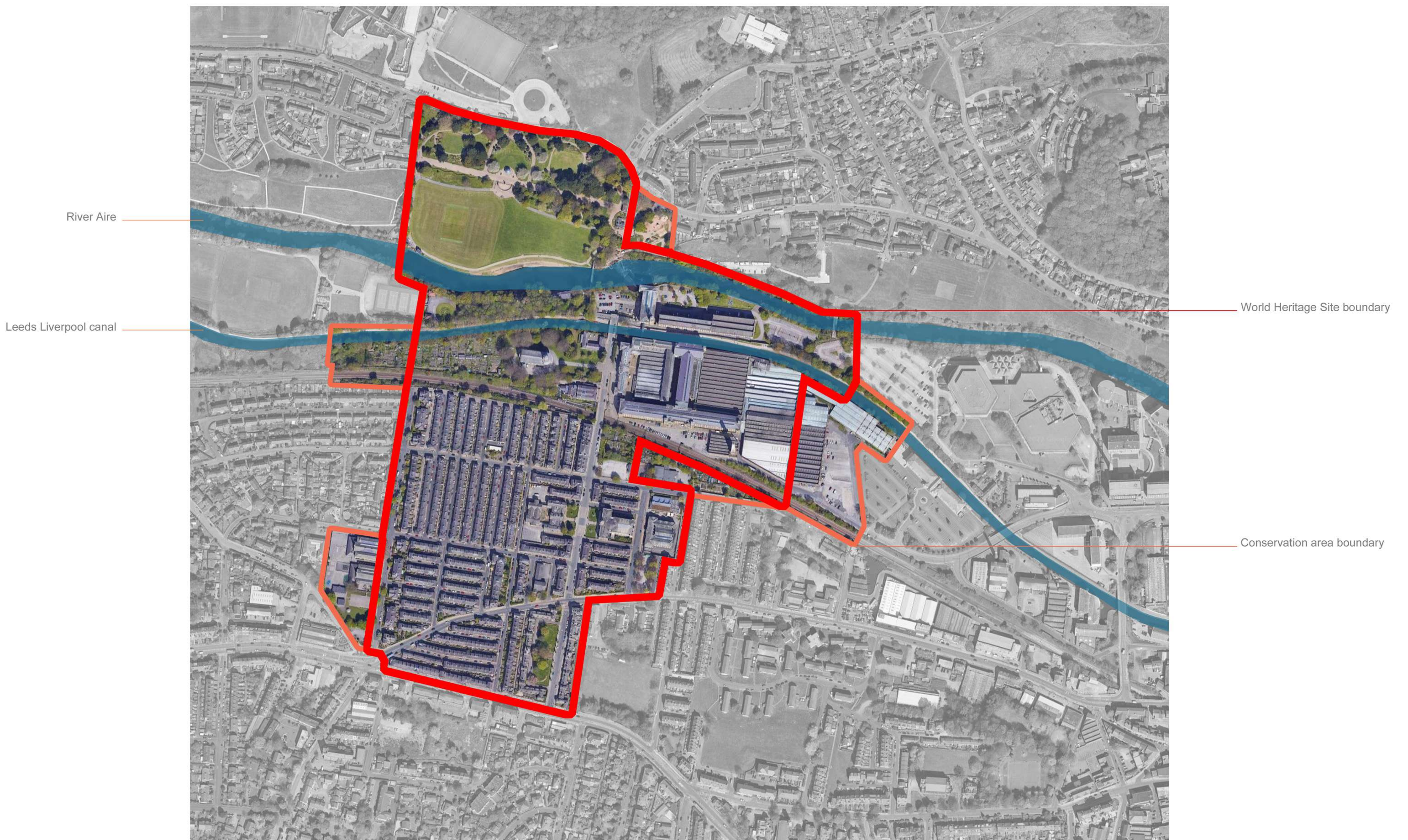
Because of this, our new building is designed in response to this very special context, and complements our existing college campus which includes several of the public buildings and institutions that Salt created for the local community and that we look after.

Our architects have looked at the setting, layout, street hierarchy and place-making principles that were central to Saltaire's original design to inform their design approach. Our new building will be part of the ensemble of civic buildings and spaces on Victoria Road and contribute positively to the World Heritage Site setting in its size, form, massing and external spaces.



Victoria Road is the civic and public building spine of Saltaire

World Heritage Site and conservation area boundaries



## setting